

FROM THE
HIGH 300s

KITCHEN
LIVING/DINING
2-3 BEDROOMS
2 BATHROOM

BEACH CONDO DETAILS

This new construction 26-unit beach condo building is located in Ocean View Beach Club South. This three-story building offers five different floorplan layouts, including 3-bedroom and 2-bedroom options. Each unit includes two bathrooms, an owner's suite with a private bathroom and walk-in shower, a spacious living area, and a washer and dryer. Benefit from all the elements of new construction in an established and flourishing coastal community!

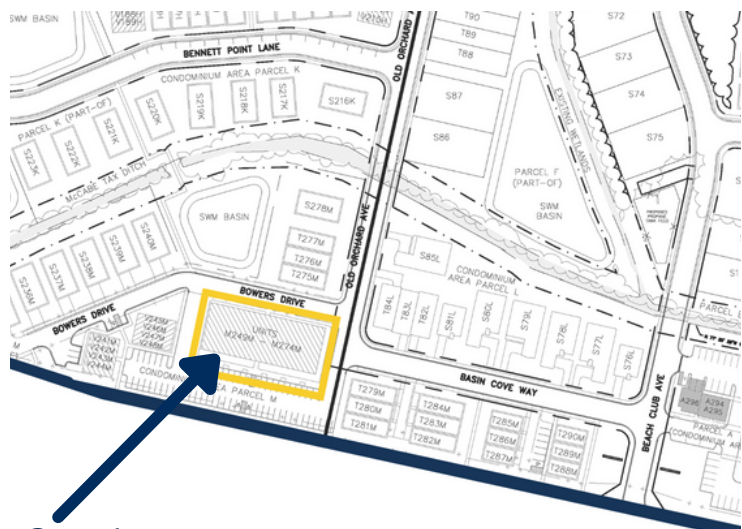
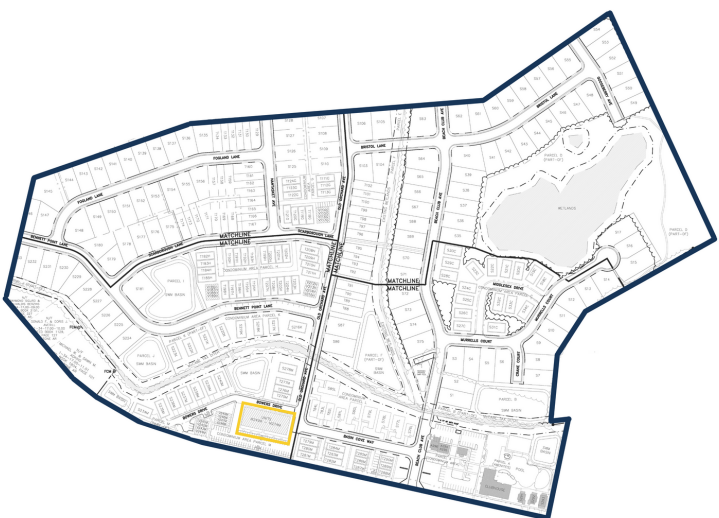
SALES CENTER

25 Beach Club Ave.
Ocean View, DE 19970
livewelloceanview.com
beachclub@nallyventures.com
302-316-4956

LISTING AGENT

Conor Nally
Nally Group at
Keller Williams Realty
Conor.Nally@thenallygroup.com
Cell: 302-841-8331
Office: 302-360-0300

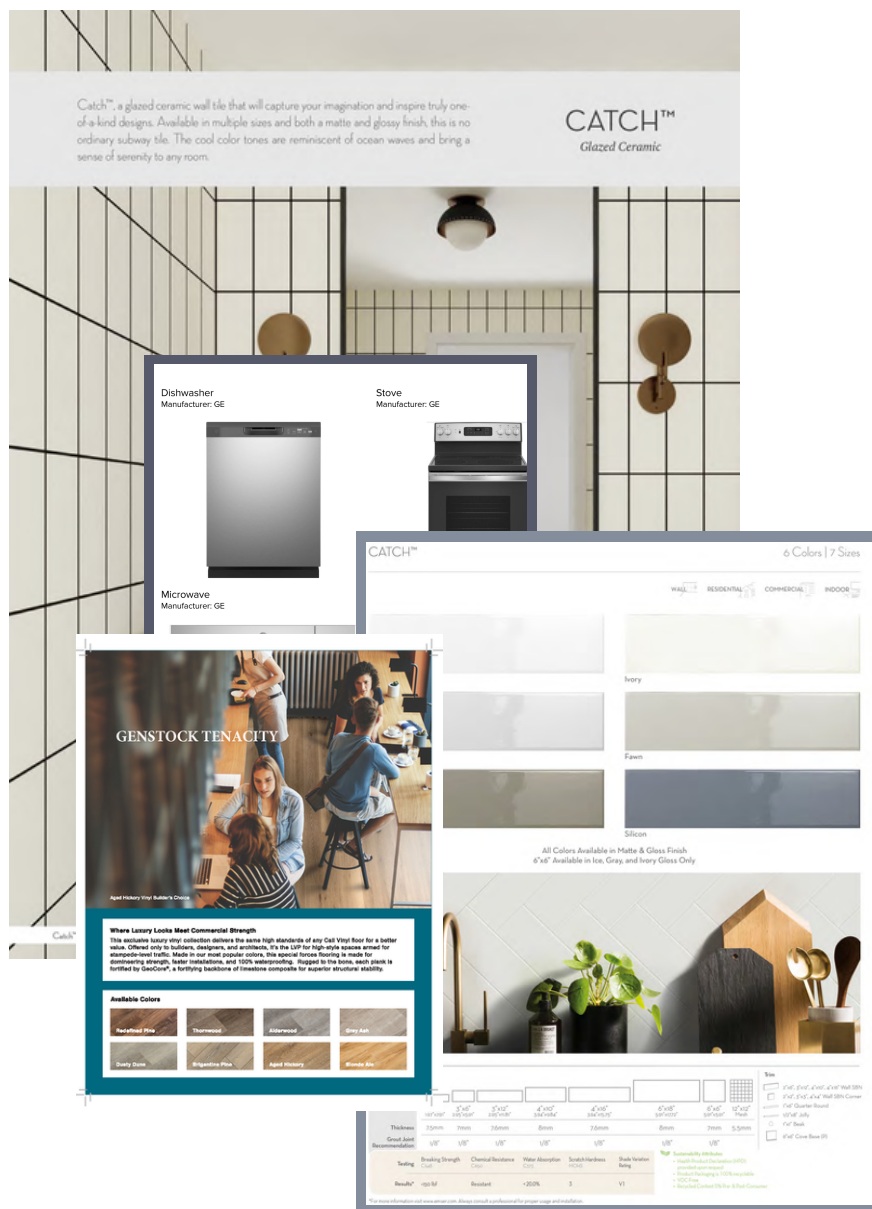
BEACH CONDO BUILDING LOCATION



Beach Condos

INCLUDED FEATURES

New homeowners are able to customize their new home, choosing from a variety of finishes! These units come with a standard package of Moen hardware in the kitchen and bathrooms and GE appliances in the kitchen and laundry room. Additionally, homeowners are able to choose from an array of colors for cabinetry, bathroom tile, countertops, and paint colors. Homeowners also have the opportunity to upgrade their selections and finishes. For more information, please ask your Ocean View Beach Club Sales Associate for the full selections packet.



FLOOR PLAN OVERVIEW

COASTAL HAVEN

3 bedroom
2 bathrooms
1,379 s.f.

First, Second & Third Floors



OCEAN DREAMS

3 bedroom
2 bathrooms
1,183 s.f.

First, Second & Third Floors



PARADISE POINT

2 bedroom unit
2 bathrooms
1,002 s.f.

First, Second & Third Floors



BEACH BLISS

2 bedroom
2 bathrooms
1,042 s.f.

First, Second & Third Floors



SEASHORE GETAWAY

2 bedroom
2 bathrooms
1,215 s.f.

Second & Third Floors



RENDERINGS & FLOOR PLANS SUBJECT TO CHANGE

BEACH CONDO BUILDING OVERVIEW

FRONT VIEW



BACK VIEW



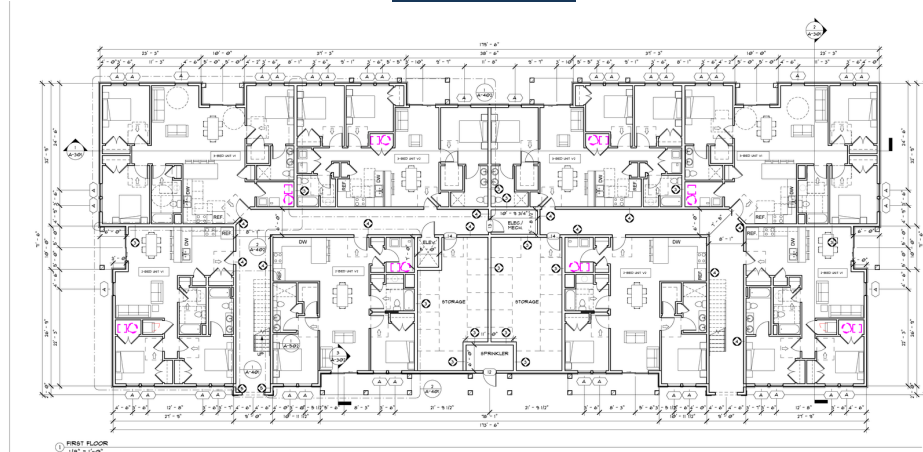
SIDE VIEWS



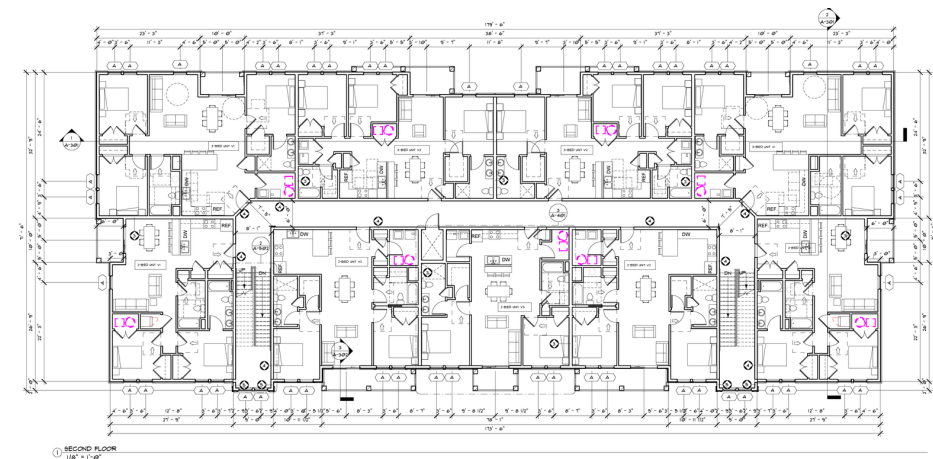
RENDERINGS & FLOOR PLANS SUBJECT TO CHANGE

BEACH CONDO BUILDING OVERVIEW

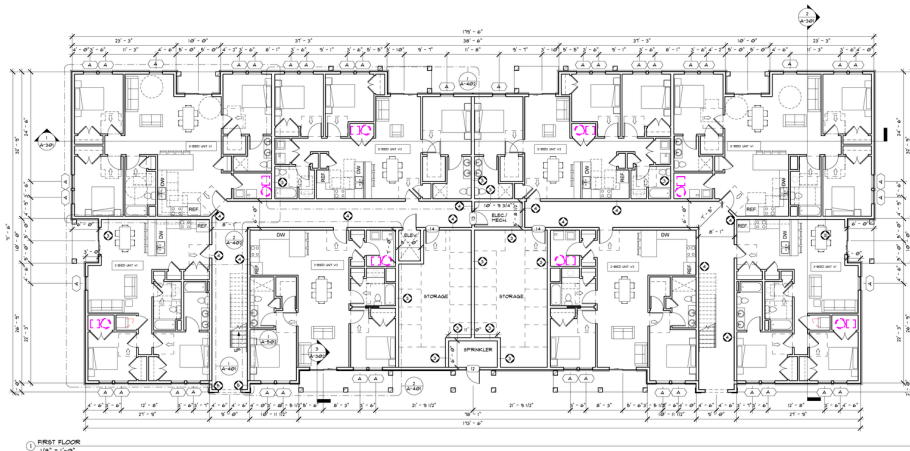
THIRD FLOOR



SECOND FLOOR



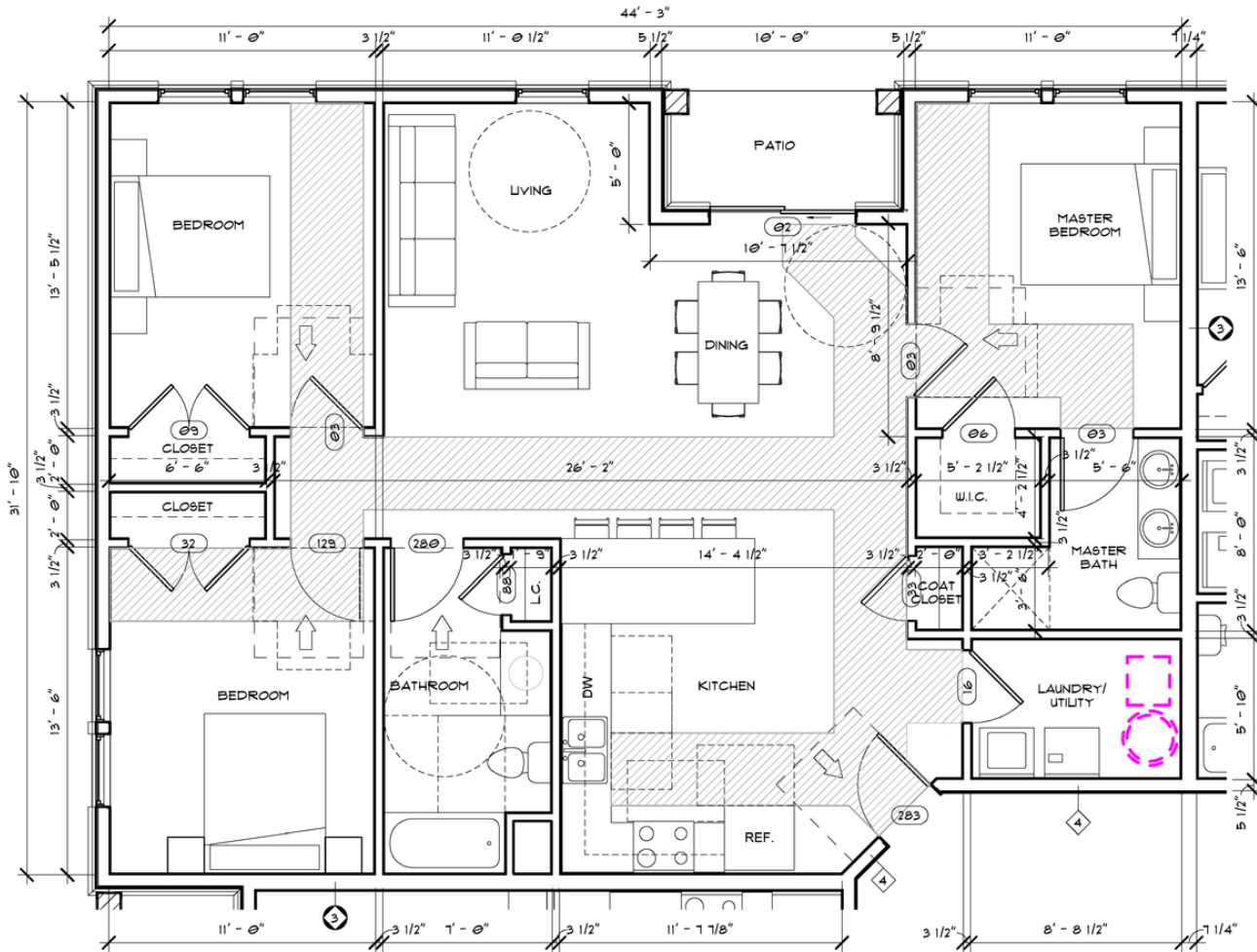
FIRST FLOOR



RENDERINGS & FLOOR PLANS SUBJECT TO CHANGE

COASTAL HAVEN

- 3 bedroom unit
- 2 bathrooms
- 1,379 s.f.
- First, Second & Third Floors
- 6 condo units of this type total



② THREE BEDROOM UNIT VI - TYPE A
1/4" = 1'-0"

GROSS AREA: 1,379 SF

RENDERINGS & FLOOR PLANS SUBJECT TO CHANGE

COASTAL HAVEN

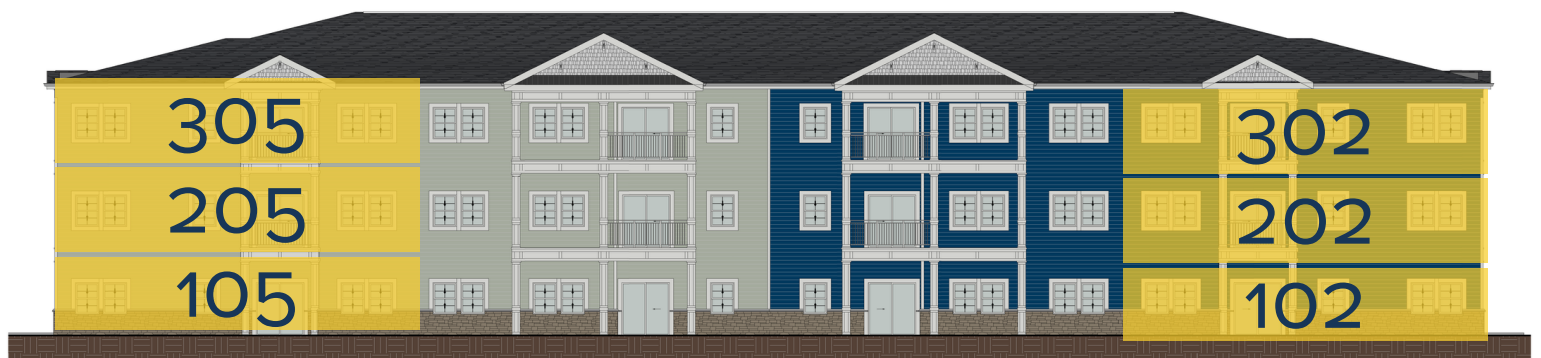
- Available units:

- 102 ◦ 105
- 202 ◦ 205
- 302 ◦ 305

FRONT VIEW

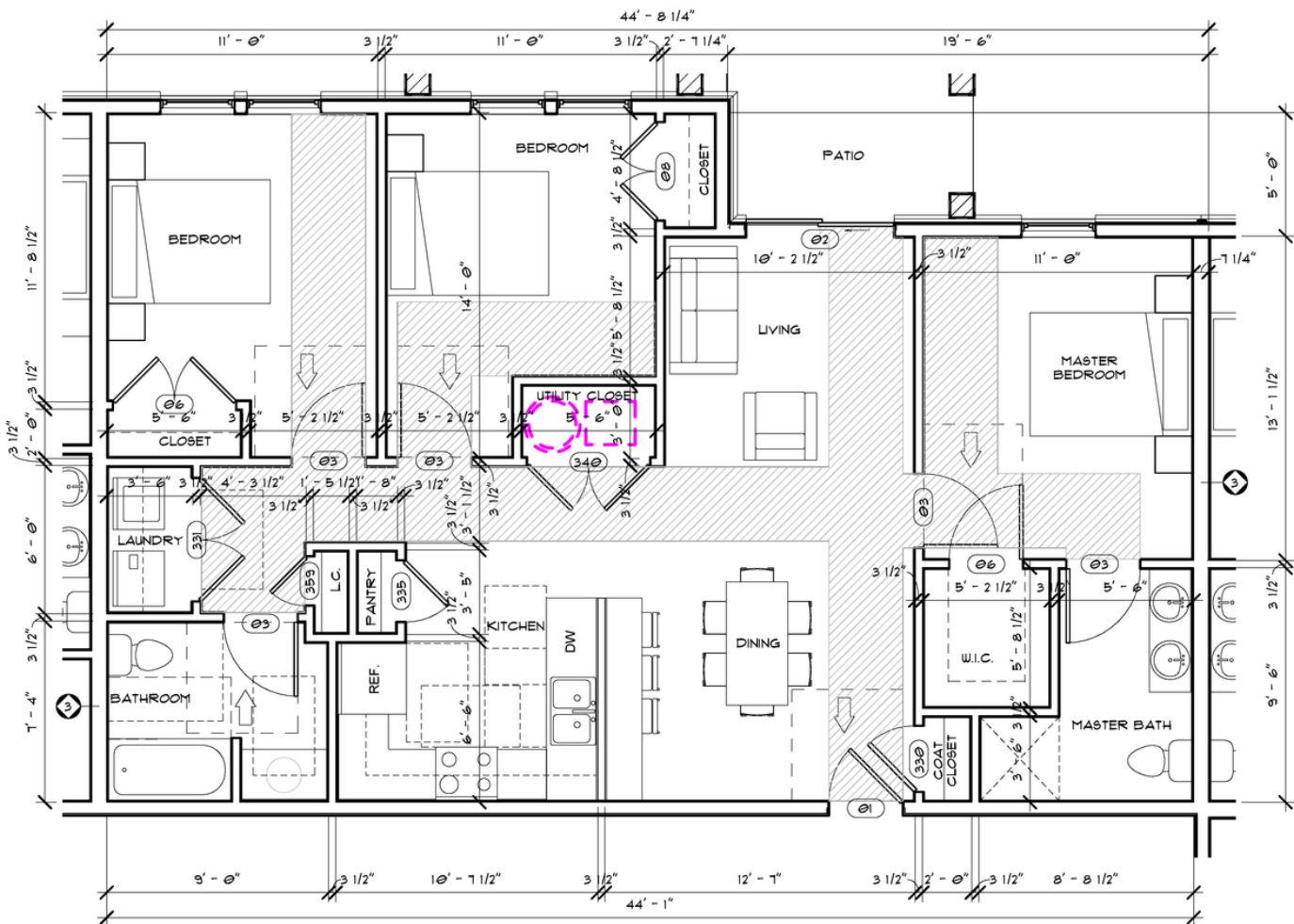


BACK VIEW



RENDERINGS & FLOOR PLANS SUBJECT TO CHANGE

-
- A 3D architectural rendering of a modern house interior, viewed from an elevated perspective. The layout features a central living area with a large fireplace, a dining table with chairs, and a kitchen with a stove and refrigerator. To the left, there is a bedroom with a bed and a bathroom. To the right, there is another bedroom with a bed and a bathroom. The house has a clean, minimalist design with white walls and light-colored flooring.



GROSS AREA: 1,183 SF

livewelloceanview.com

OCEAN DREAMS

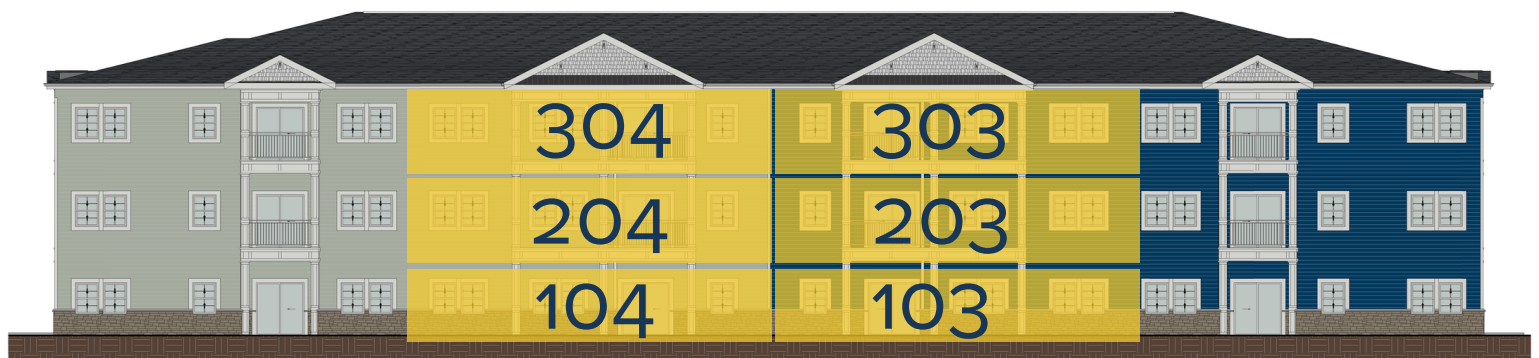
- Available units:

- 103 ◦ 104
- 203 ◦ 204
- 303 ◦ 304

FRONT VIEW



BACK VIEW



RENDERINGS & FLOOR PLANS SUBJECT TO CHANGE

PARADISE POINT

- Available units:

- 101 ◦ 106
- 201 ◦ 206
- 301 ◦ 306

FRONT VIEW



BACK VIEW



RENDERINGS & FLOOR PLANS SUBJECT TO CHANGE

BEACH BLISS

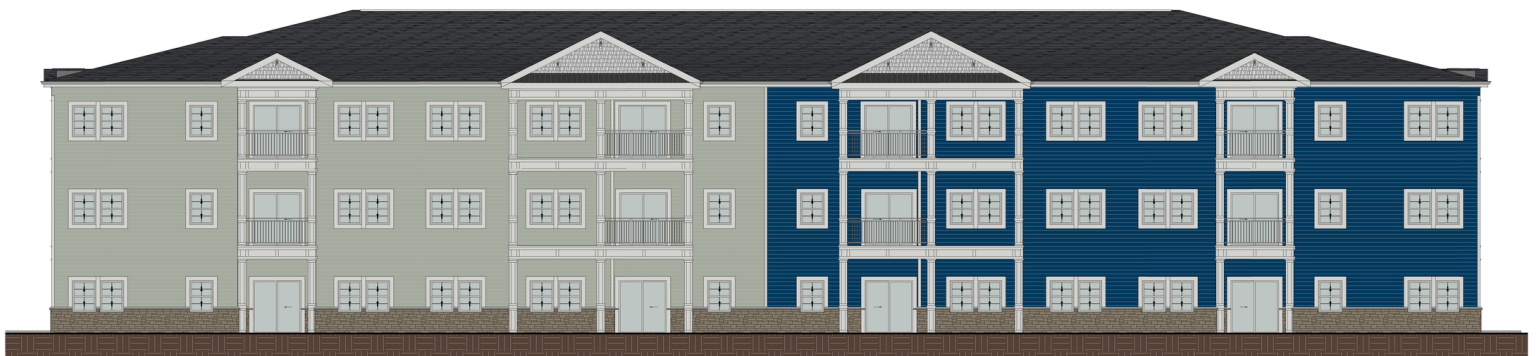
- Available units:

- 107 ◦ 108
- 207 ◦ 209
- 307 ◦ 309

FRONT VIEW



BACK VIEW



RENDERINGS & FLOOR PLANS SUBJECT TO CHANGE

-



livewelloceanview.com

SEASHORE GETAWAY

- Available units:
 - 208
 - 308

FRONT VIEW



BACK VIEW



RENDERINGS & FLOOR PLANS SUBJECT TO CHANGE